



 **Elev8**  
PORTABLE MOBILITY HOIST

---

User Manual

---

## Table of Contents

Introduction	3
Scope of use and notes	4
Product Structure	5
Technical Specifications	6
Use instruction	7

# Introduction

---

**Thank you for choosing to purchase the Elev8 portable mobility hoist.**

**Your safety is our utmost priority. Please read and follow all instructions in this owner's manual carefully before operating your Elev8 portable mobility for the first time. For your own safety, it is crucial that you completely understand the instructions given in this owner's manual.**

**Motion Healthcare is not liable for any property damage or bodily injury which may occur as a result of improper use of this power wheelchair or failing to follow the instructions in this owner's manual.**

**If you have problem in comprehending the warnings and instructions contained in this manual, please contact your distributor, or your provider or the manufacturer. We, at Motion Healthcare, strive to enrich your life!**

**Motion Healthcare**

## Scope of Use and Notes

The Elev8 is an electric lifting platform with locking castor wheels. The platform can be moved up and down between 25cm to 90cm, lifting a maximum weight of 50kg. The Elev8 should be used on a flat surface with the a slope less than 3°.

Notes:

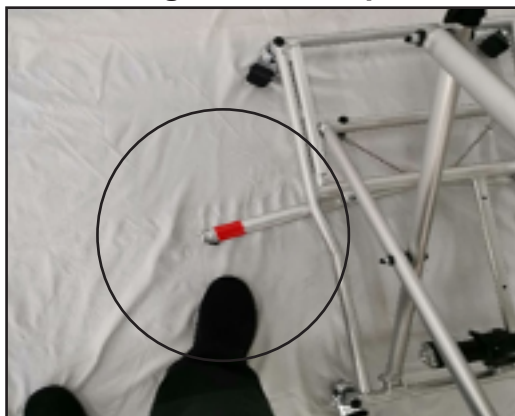
1. Lock the platform with the castor brake before the lifting operation.



2. Place the article on the center of the platform, and fix the article before the lifting operation of the platform



3. When the platform is being lifted up, the anti-tipping rod in the bottom will extend out, so the user should be careful when walking around the platform.




# Product Structure



# Technical Specifications

---

SPECIFICATION	 <b>Elev8</b> <small>PORTABLE MOBILITY HOIST</small>
<b>MAXIMUM LIFTING CAPACITY</b>	50 kg
<b>SIZE (FOLDED)</b>	750mm x 480mm x 230mm
<b>SIZE (UNFOLDED)</b>	750mm x 730mm x 910mm
<b>TOTAL WEIGHT (WITHOUT BATTERY)</b>	10 kg
<b>TOTAL WEIGHT (WITH BATTERY)</b>	11 kg
<b>MAXIMUM SLOPE</b>	3°
<b>BATTERY SIZE</b>	5ah
<b>MOTOR SIZE</b>	29v 75w

# Use Instruction

1. The following example is demonstrated using a Foldalite Powerchair.

## 1) Mounting Operation



A1. Align yellow line on the tabletop with the tyre, without too much deviation.



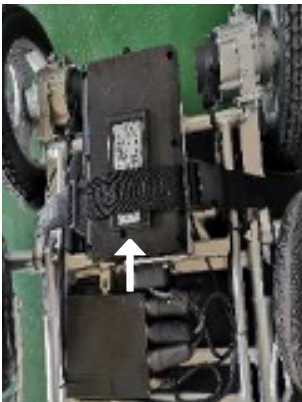
A2. Step on the brakes on four castors, and ensure that the wheel cannot turn



A3. Untie the safety belt



A4. The wheelchair is placed on the tabletop in an inverted direction as shown in the picture with the wheels in contact with the edge of the tabletop.



A5. Buckle the belt



A6. Keep pressing the Up button on the controller, till the tabletop reaches the bottom surface of the trunk of the vehicle.



A7. Release the brakes on all castors.

# Use Instruction



A8. Move the platform to the side of the trunk, adjust the platform height, as shown in the picture, to the height that the anti-overturn small wheel of the wheelchair can go into the trunk...



A9. Step on the brakes on four castors, and ensure that the wheel cannot turn



A10. Place the controller into the battery pack to prevent any damage.



A11. Untie the safety belt



A12. Manually grasp the position in the picture to lift the wheelchair.



A13. Push it into the trunk, and guarantee that the wheelchair is stably placed. Release the brakes on all castors



A14. Keep pressing the Down button on the controller, so that the platform is totally closed.



A15. Collect the controller and power plug into the battery pack, and buckle the safety belt. Place the platform car into the trunk of the vehicle or other proper position.



# Use Instruction

## 1) Dismounting Operation



B1. Take out the controller and power plug from the battery pack.



B4. Keep pressing the Up button on the controller, till the tabletop reaches the bottom surface of the trunk of the vehicle.



B5. Adjust the position of the platform car, so that the tabletop is 50mm higher than the trunk height. Align the two yellow lines on the platform with the tyres.



B6. Step on the brakes on four castors, and ensure that the wheel cannot turn



B7. Manually grasp the position in the picture to lift the wheelchair. Move the wheelchair from the trunk to the platform car



B8. The tyres are in contact with the edge of the tabletop as shown in the picture, to ensure that the wheelchair is stably placed.



B9. Buckle the safety belt



B10. Release the brakes on all castors.



B11. Move the platform car from the vehicle, and ensure that the platform car will not collide with the vehicle during the lowering operation. Keep pressing the Down button on the controller, so that the platform is totally closed.

# Use Instruction



B12. Untie the safety belt



B13. When one end is lifted up, the wheelchair will be moved away from the platform after the landing of the motor wheel of the wheelchair.



B14. Buckle the safety belt



B15. Collect the controller and power plug into the battery pack, and buckle the safety belt. Place the platform car into the trunk of the vehicle or other proper position.

**Notes:** Please ensure all goods placed on the platform are securely strapped in place before starting to move them.

1. When lifting the platform, it is required to ensure that the castors have brakes applied, and avoid the movement of the platform during the lifting and lowering operation, and it is better to hold the wheelchair with one hand.
2. When the power plug is connected with the wheelchair power supply, it is required to fix the fastening tape onto the wheelchair and insert the power plug. Otherwise there will be the risk that the power plug pops out.
3. After the operation, the controller is placed into the battery pack, to avoid being broken or trampled.

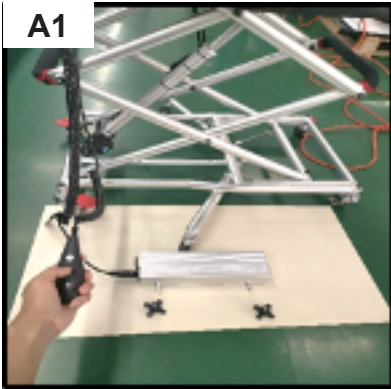
**\* If you have opted to purchase the dedicated Elev8 Battery and charger then please follow these instructions.**

## 2 External battery connection operation

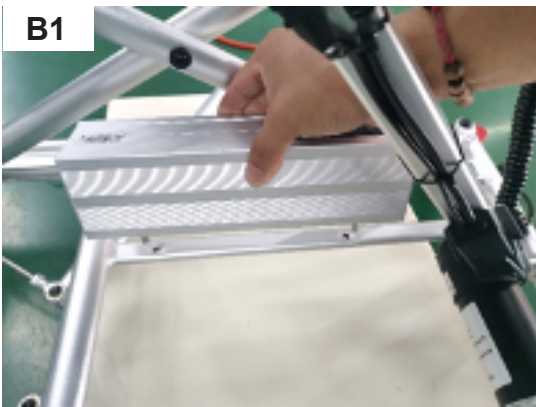


The lifting platform can also be powered by the battery of PL001 wheelchair. There is one changeover plug in the accessory, and proper plug can be chosen and inserted and then placed into the battery pack.

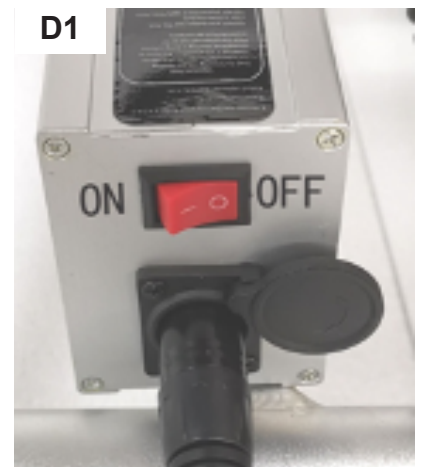
### 3 Battery Installation Instructions of Boarding Device



1. As shown in the figure. Before installing the battery, connect the power plug on the boarding device to the battery, and press the UP button on the manual controller to raise the boarding device by about 50cm.



2. Insert the two screws on the battery into the corresponding holes on the frame and tighten the knob. Make sure that the battery is installed in the same direction as Figure B.



3. In order to prevent the power plug from falling off during use, please fasten the buckle and ensure that the power plug is tightly inserted. Turn on the power switch battery is installed in the same direction as Figure B.

4. When the boarding device is not used for a long time, please p turn off the power switch..

# Use Instruction

## 3 Battery Installation Instructions of Boarding Device



As shown in Figure B, connect one end of the charger to the battery and the other end to the charging plug. The red light on the charger indicates that it is charging and the green light indicates that it is fully charged.



2. If the battery is mounted on the boarding device, you only need to pull out the power plug and insert the charger plug to charge the battery.

### Notes:

1. Fully charge the battery first when it is not used for a long time. Charge the battery at least once a month, and each time when you charge it, please wait the light turns green.
2. The battery must be charged with a matching charger to avoid battery damage.
3. The charging environment must be dry, ventilated, and free of inflammable and explosive materials to prevent fire.
4. This battery cannot be used in other equipment to avoid battery damage.